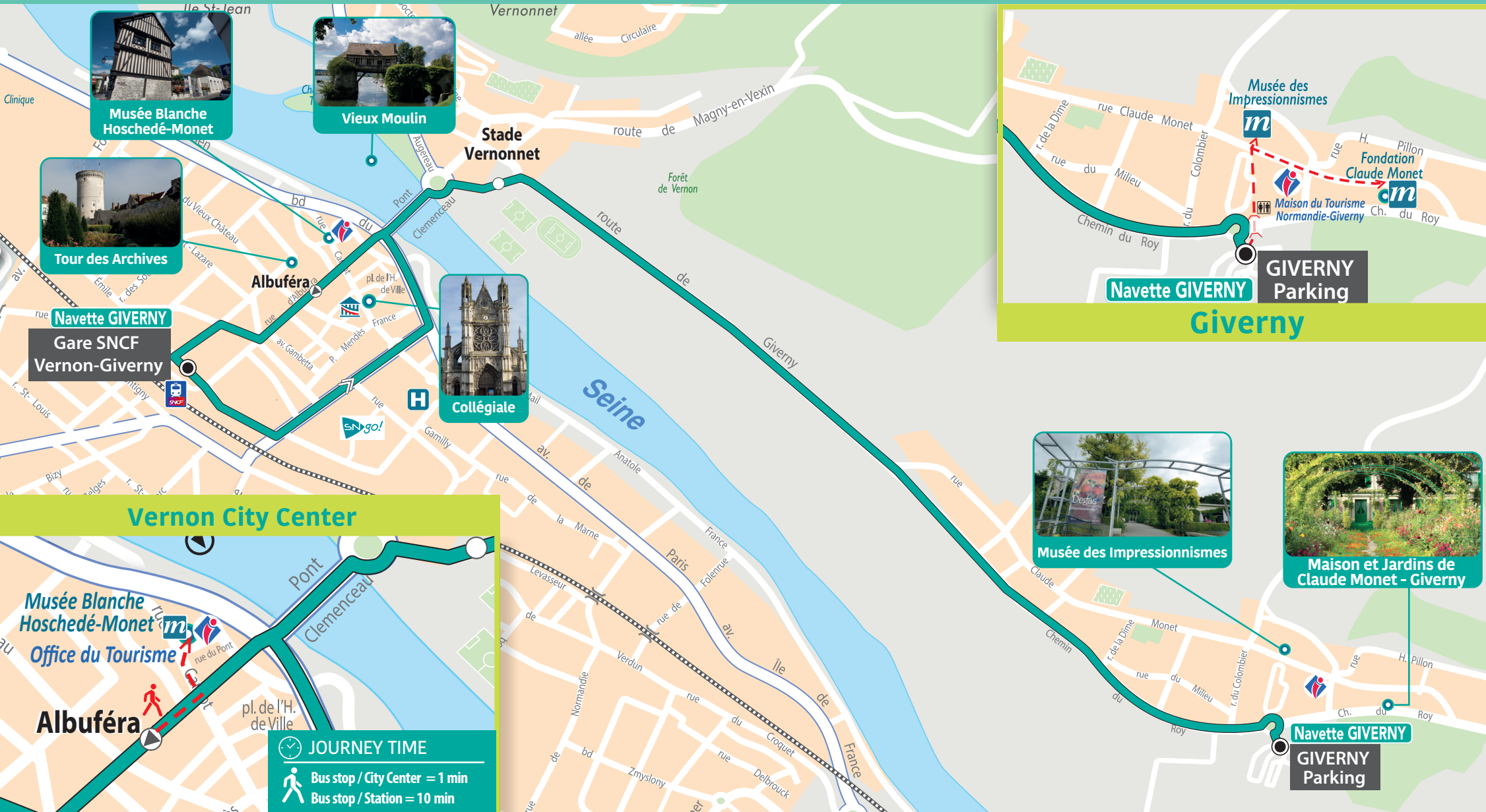
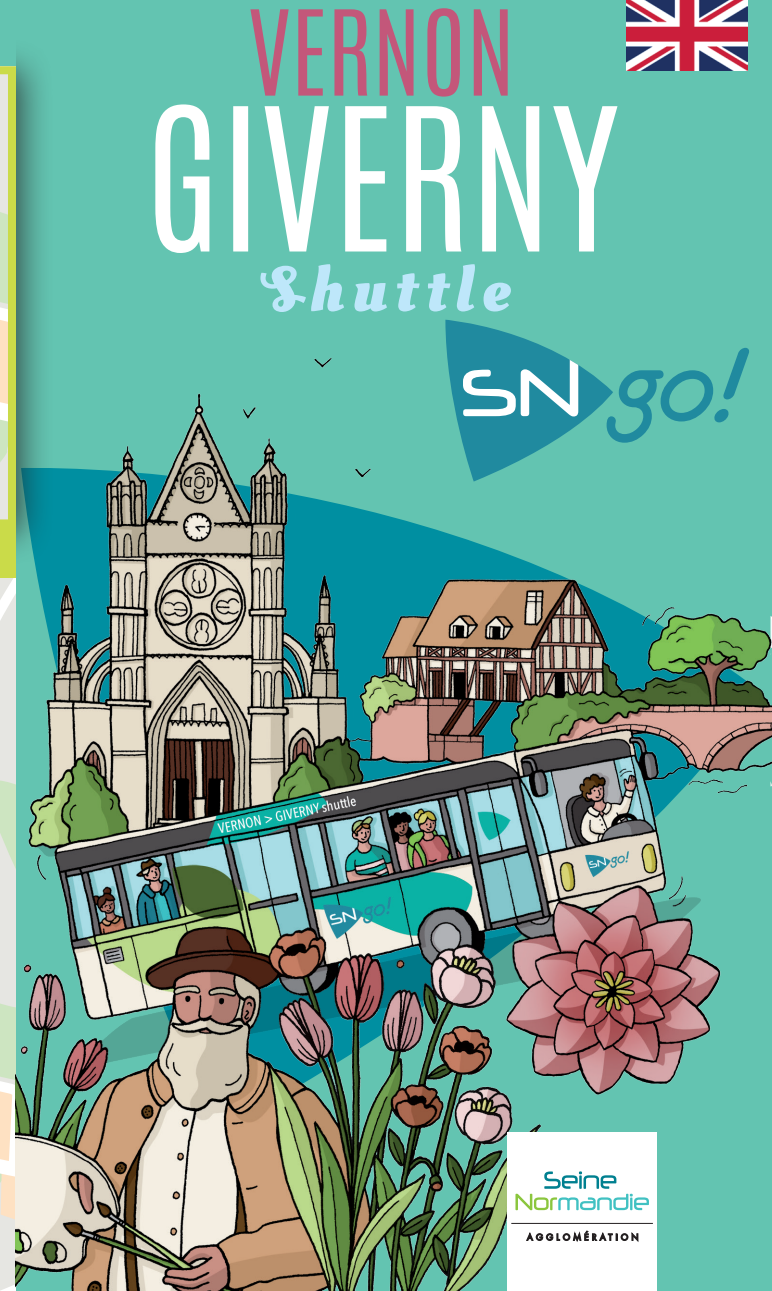


# MUST SEE ATTRACTIONS TO EXPLORE IN VERNON AND GIVERNY



**JOURNEY TIME**

- Bus stop / City Center = 1 min
- Bus stop / Station = 10 min



**VERNON**  
VERNON GIVERNY Train Station



**GIVERNY**  
Parking

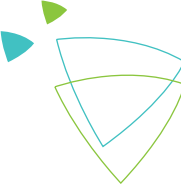
**GIVERNY**  
Parking



**VERNON**  
VERNON GIVERNY Train Station

**VALID**

from march 27<sup>th</sup> to november 1<sup>st</sup> 2026



**Monday to Friday**

*Trains from Paris* 9:02<sup>am</sup> 11:00<sup>am</sup> 12:05<sup>am</sup> 1:00<sup>pm</sup> 3:01<sup>pm</sup> 5:50<sup>pm</sup>

**Gare SNCF Vernon-Giverny** 9:20<sup>am</sup> 11:20<sup>am</sup> 12:25<sup>am</sup> 1:20<sup>pm</sup> 3:20<sup>pm</sup> 6:00<sup>pm</sup>

**VERNON Stade Vernonnet** 9:27<sup>am</sup> 11:27<sup>am</sup> 12:32<sup>am</sup> 1:27<sup>pm</sup> 3:27<sup>pm</sup> 6:07<sup>pm</sup>

**GIVERNY Parking** 9:40<sup>am</sup> 11:40<sup>am</sup> 12:45<sup>am</sup> 1:40<sup>pm</sup> 3:40<sup>pm</sup> 6:20<sup>pm</sup>

**Saturday - Sunday - Bank Holidays**

*Trains from Paris* 9:13<sup>am</sup> 11:13<sup>am</sup> 12:05<sup>am</sup> 1:13<sup>pm</sup> 3:11<sup>pm</sup>

**Gare SNCF Vernon-Giverny** 9:30<sup>am</sup> 11:25<sup>am</sup> 12:25<sup>am</sup> 1:30<sup>pm</sup> 3:30<sup>pm</sup>

**VERNON Stade Vernonnet** 9:37<sup>am</sup> 11:32<sup>am</sup> 12:32<sup>am</sup> 1:37<sup>pm</sup> 3:37<sup>pm</sup>

**GIVERNY Parking** 9:50<sup>am</sup> 11:45<sup>am</sup> 12:45<sup>am</sup> 1:50<sup>pm</sup> 3:50<sup>pm</sup>

**Monday to Friday**

**GIVERNY Parking** 10:20<sup>am</sup> 11:00<sup>am</sup> 12:20<sup>am</sup> 1:20<sup>pm</sup> 3:20<sup>pm</sup> 4:20<sup>pm</sup> 5:20<sup>pm</sup> 6:20<sup>pm</sup> 7:20<sup>pm</sup>

**VERNON Stade Vernonnet** 10:30<sup>am</sup> 11:10<sup>am</sup> 12:30<sup>am</sup> 1:30<sup>pm</sup> 3:30<sup>pm</sup> 4:30<sup>pm</sup> 5:30<sup>pm</sup> 6:30<sup>pm</sup> 7:30<sup>pm</sup>

*Albuféra* 10:35<sup>am</sup> 11:15<sup>am</sup> 12:35<sup>am</sup> 1:35<sup>pm</sup> 3:35<sup>pm</sup> 4:35<sup>pm</sup> 5:35<sup>pm</sup> 6:35<sup>pm</sup> 7:35<sup>pm</sup>

**Gare SNCF Vernon-Giverny** 10:40<sup>am</sup> 11:20<sup>am</sup> 12:40<sup>am</sup> 1:40<sup>pm</sup> 3:40<sup>pm</sup> 4:40<sup>pm</sup> 5:40<sup>pm</sup> 6:40<sup>pm</sup> 7:40<sup>pm</sup>

*Trains to Paris* 10:55<sup>am</sup> 11:42<sup>am</sup> 12:55<sup>am</sup> 1:54<sup>pm</sup> 3:57<sup>pm</sup> 4:55<sup>pm</sup> 5:57<sup>pm</sup> 7:02<sup>pm</sup> 7:58<sup>pm</sup>

**Saturday - Sunday - Bank Holidays**

**GIVERNY Parking** 10:20<sup>am</sup> 11:00<sup>am</sup> 11:50<sup>am</sup> 12:50<sup>am</sup> 2:15<sup>pm</sup> 2:55<sup>pm</sup> 4:20<sup>pm</sup> 5:20<sup>pm</sup> 6:20<sup>pm</sup>

**VERNON Stade Vernonnet** 10:30<sup>am</sup> 11:10<sup>am</sup> 12:00<sup>am</sup> 1:00<sup>pm</sup> 2:25<sup>pm</sup> 3:05<sup>pm</sup> 4:30<sup>pm</sup> 5:30<sup>pm</sup> 6:30<sup>pm</sup>

*Albuféra* 10:35<sup>am</sup> 11:15<sup>am</sup> 12:05<sup>am</sup> 1:05<sup>pm</sup> 2:30<sup>pm</sup> 3:10<sup>pm</sup> 4:35<sup>pm</sup> 5:35<sup>pm</sup> 6:35<sup>pm</sup>

**Gare SNCF Vernon-Giverny** 10:40<sup>am</sup> 11:20<sup>am</sup> 12:10<sup>am</sup> 1:10<sup>pm</sup> 2:35<sup>pm</sup> 3:15<sup>pm</sup> 4:40<sup>pm</sup> 5:40<sup>pm</sup> 6:40<sup>pm</sup>

*Trains to Paris* 10:54<sup>am</sup> 11:54<sup>am</sup> 12:51<sup>am</sup> 1:56<sup>pm</sup> 2:52<sup>pm</sup> - 4:53<sup>pm</sup> 5:55<sup>pm</sup> 6:53<sup>pm</sup>

**PRICES**

Single ticket

Return ticket



TICKETS ARE SOLD ON BOARD.  
CASH OR CREDIT CARDS  
ACCEPTED.



**CHECK THE SHUTTLE'S  
IN REAL TIME !**



**WIFI  
GRATUIT  
À BORD !**

More informations on [sngo.fr](http://sngo.fr)

**PRACTICAL INFORMATION**

The Giverny Shuttle takes you to the village of Giverny from the Vernon-Giverny train station. Access to the vehicle depends on the number of seats available.

When coming back from Giverny, to ensure connection times with the train, we recommend that passengers arrive several minutes before the scheduled departure.

Line 11 to McArthurGlen Paris-Giverny Outlet.



Extend your stay to discover the city centre of Vernon and Monet's paintings at the Blanche Hoschedé-Monet Museum!

